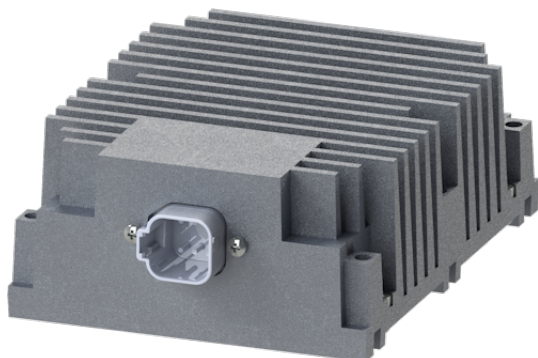


ELECTRIC VEHICLES

RTE-24-12-20A

12V converter for 24V batteries.



Voltage reducer RTE-241220A is a not isolated DC-DC converter with 24Vdc input and 13Vdc output.

The converter has a main output with max available current 20A, and an auxiliary output with max available current 1A. It is used to supply regulated voltage for instruments powered with nominal voltage 12Vdc on plants with 24Vdc source. The converter is housed in a sturdy aluminum case, resistant to mechanic stress, thermal stress and electromagnetic interference.

The system is equipped with a protection against the inversion of power supply polarity.

PRODUCT CERTIFICATIONS

STANDARD



TECNICAL SPECIFICATION

Features	Type	Description
Dimensions	External Dimensions (L x H x W mm)	157x115x55
Protection	Protection Level (standard)	IP65
Temperature	Working Temperature (°C)	-40...+85
	Storage Temperature (°C)	-55...+105
Power Supply	Power Supply Range (standard)	24 Vdc

DIMENSIONAL LAY-OUT

